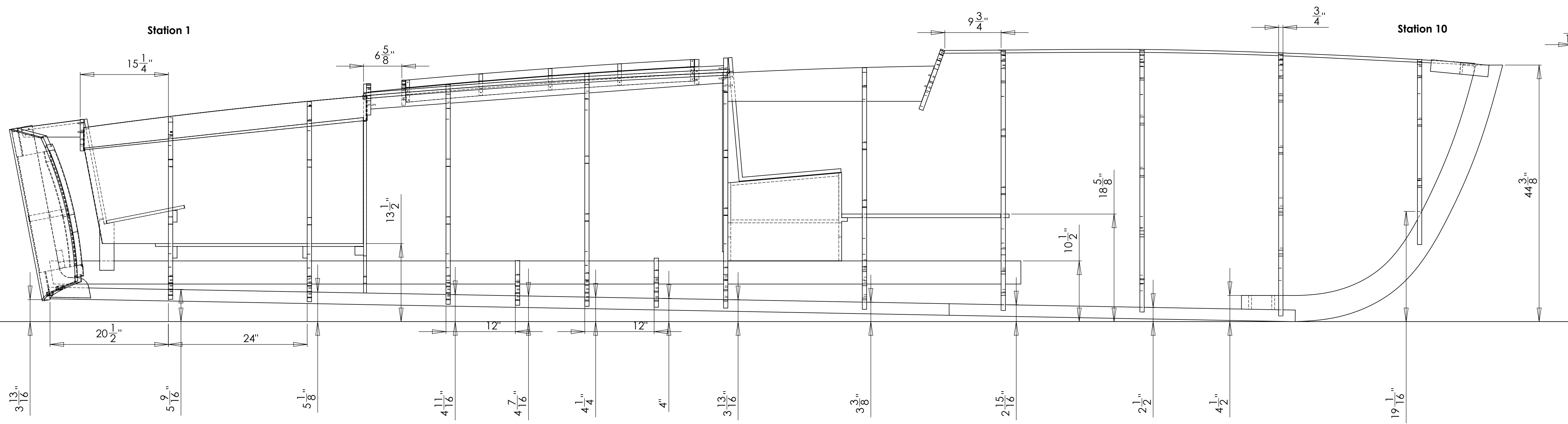
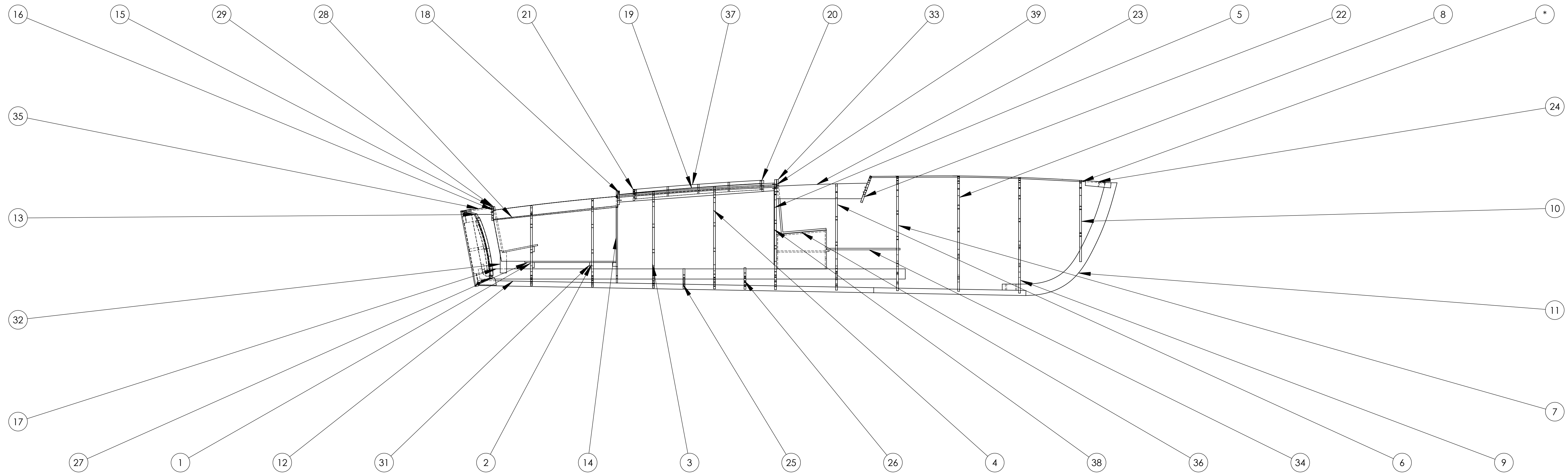
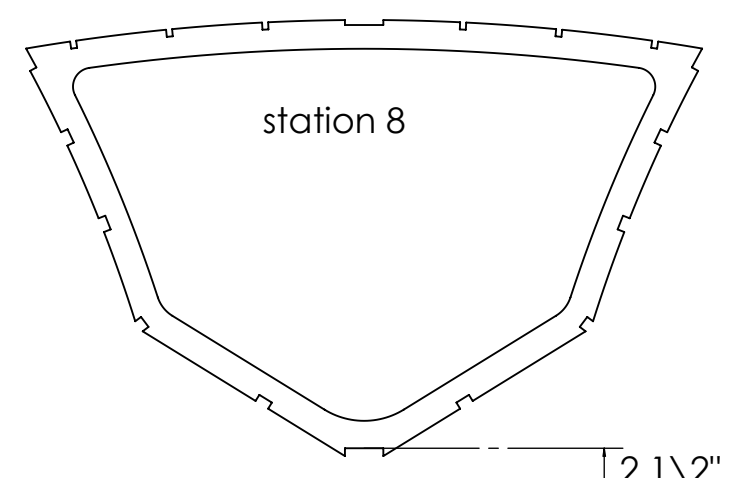


Vixen 21' 6"



Height from Base line to keel point of frames



ITEM NO.	PART NUMBER	DESCRIPTION	QTY.
1	Station 1 V		1
2	Station 2 V		1
3	Station 3 V		1
4	Station 4 V		1
5	Station 5 V		1
6	Station 6 V		1
7	Station 7 V		1
8	Station 8 V		1
9	Station 9 V		1
10	Station 10 V		1
11	Stem V		1
12	Keel V		1
13	Transom assy V		1
14	Rear bulkhead V		1
15	Deck beam 1 V		1
16	Cockpit rear coaming V		2
17	Stringer V		2
18	Deck beam 2 V		1
19	Hatch trim V		2
20	Hatch header forward V		1
21	Hatch header rear V		1
22	Dash V		1
23	Cockpit coaming V		2
24	Breasthook V		1
25	Floor timber 3a V		1
26	Floor timber 4a V		1
27	Cockpit floor rear V		1
28	Cockpit rear side V		2
29	Seat rear back V		1
30	Seat rear V		1
31	Seat rear brace V		3
32	Seat rear upright support V		2
33	Drivers bench V		1
34	Cockpit floor V		1
35	Transom to deck beam support V		2
36	Bench support V		1
37	Hatch assy V		1
38	Bulkhead Station 5 V		1
39	Vent support plank V		1

All stations space at 2 feet from 1-10
 All stations shown as 3/4"
 Keel is tapered to 2" stem

Stations are keyed for stringer positioning

