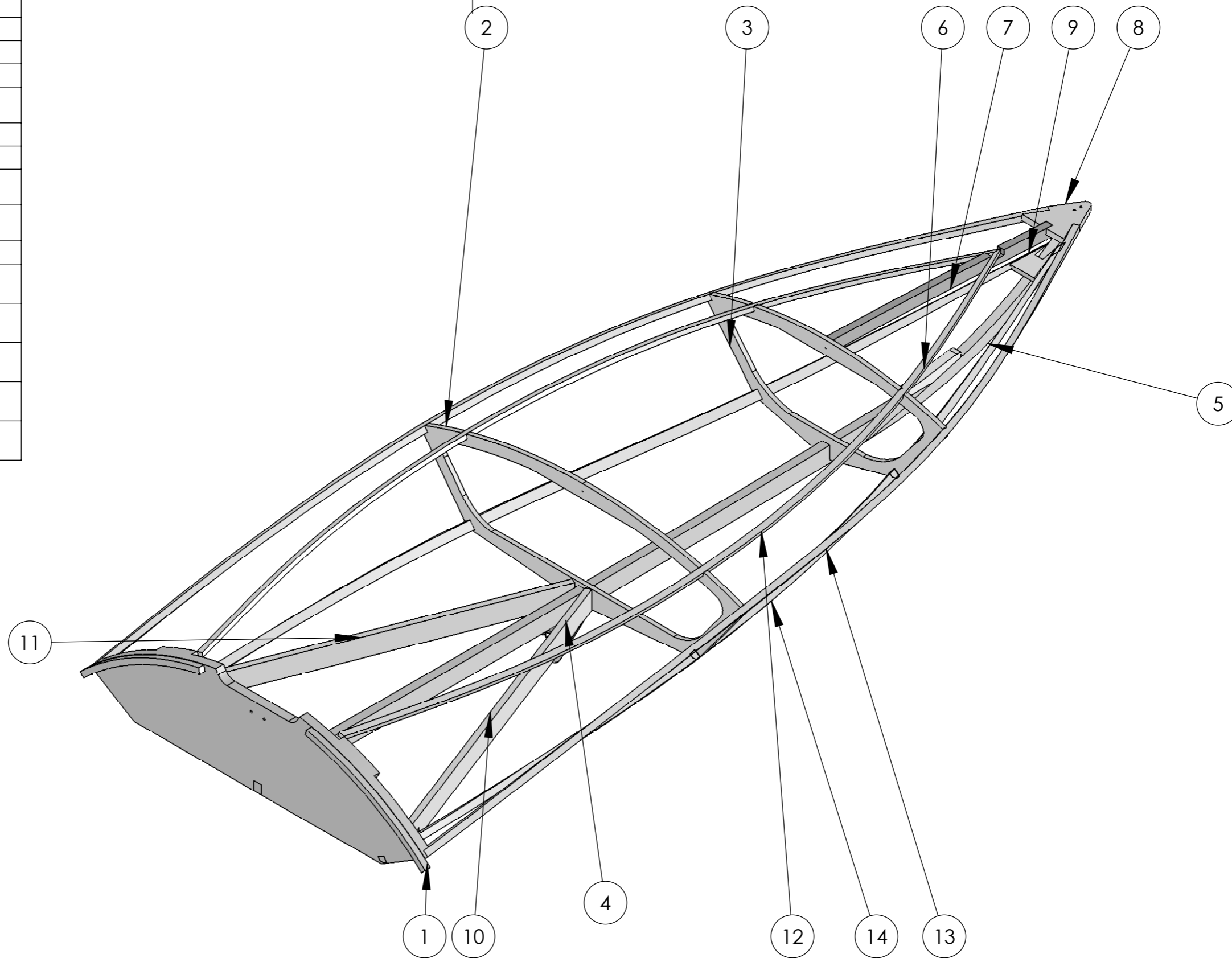


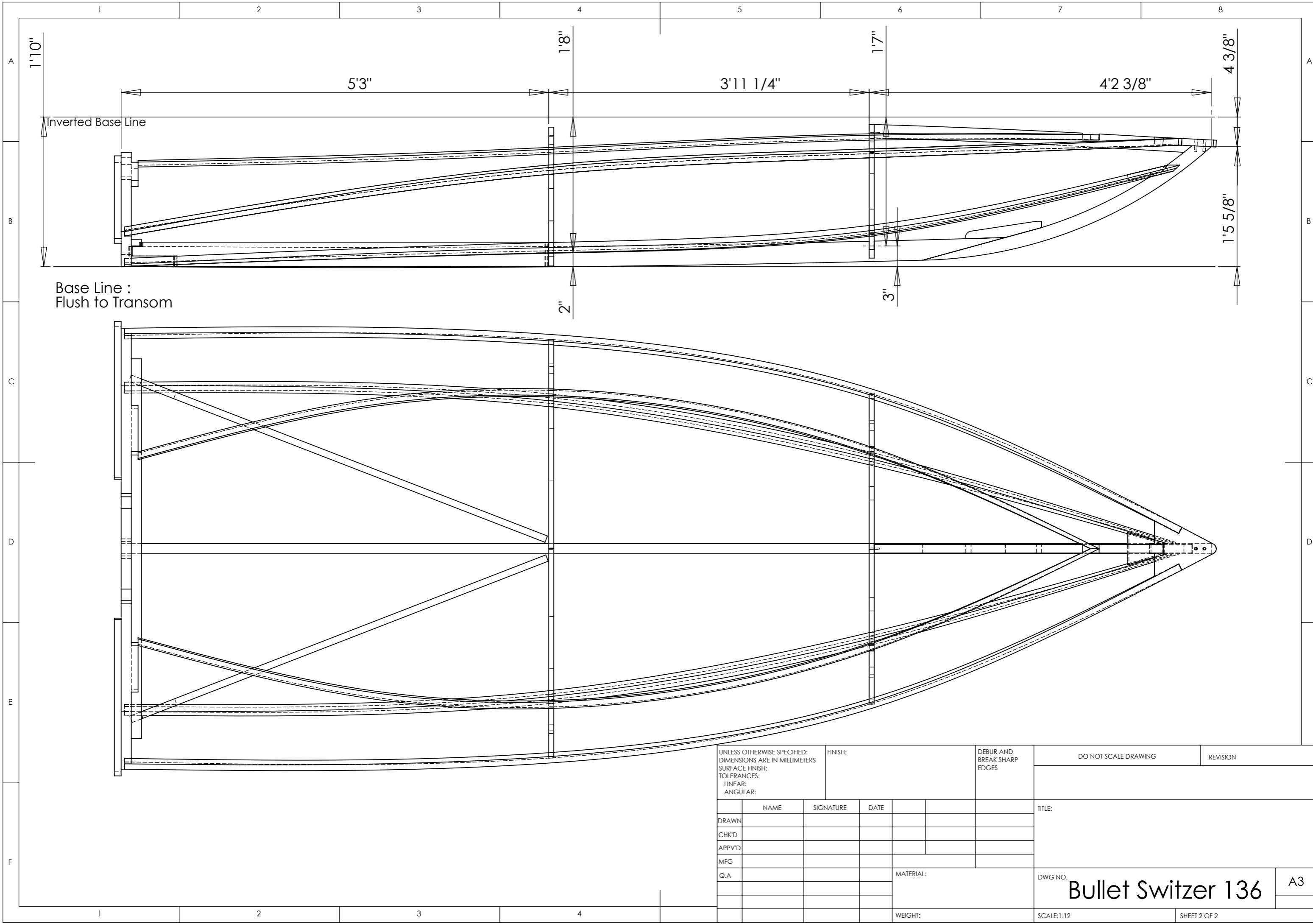
ITEM NO.	PART NUMBER	QTY.
1	Transom Bullet	1
2	St 2 Bullet136	1
3	St 1 Bullet136	1
4	Keel Bullet 136	1
5	Stem Bullet 136	1
6	Stem knee Bullet 136	1
7	Forward centre batten Bullet	1
8	Breasthook Bullet 136	1
9	Chine Log Bullet 136	1
10	Transom to ST 2 Support 136	1
11	Transom to ST 2 Support 136 mirrored	1
12	Deck batten Bullet	1
13	Sheer clamp Bullet	1
14	Chine rail Bullet	1



UNLESS OTHERWISE SPECIFIED: DIMENSIONS ARE IN MILLIMETERS SURFACE FINISH: TOLERANCES: LINEAR: ANGULAR:				FINISH:		DEBUR AND BREAK SHARP EDGES		DO NOT SCALE DRAWING		REVISION	
DRAWN				NAME		SIGNATURE		DATE		TITLE:	
CHK'D											
APPV'D											
MFG											
Q.A								MATERIAL:		DWG NO.	
										Bullet Switzer 136	
								WEIGHT:		SCALE:1:15	
										SHEET 1 OF 2	

Classic Wooden Boat Plans

Bullet Switzer 136 A3



Base Line :
Flush to Transom

UNLESS OTHERWISE SPECIFIED: DIMENSIONS ARE IN MILLIMETERS				FINISH:		DEBUR AND BREAK SHARP EDGES		DO NOT SCALE DRAWING		REVISION	
SURFACE FINISH:											
TOLERANCES:											
LINEAR:											
ANGULAR:											
		NAME		SIGNATURE		DATE				TITLE:	
DRAWN											
CHK'D											
APPV'D											
MFG											
Q.A								MATERIAL:		DWG NO.	
										Bullet Switzer 136	
								WEIGHT:		SCALE:1:12	
										SHEET 2 OF 2	
										A3	